



Simple and easy appearance, in line with contemporary aesthetic concept. The product has the structure and appearance design patent. The lamp body adopts high-pressure cast aluminum and aluminum alloy, the surface is coated with outdoor used powder, double anti-corrosion to extend service life. This lawn lamp series uses LED. High efficiency constant current driver, ensure the light source is maximum used.

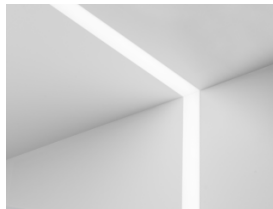
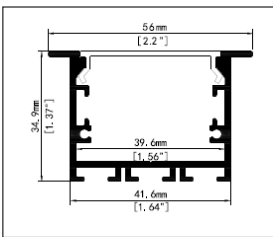
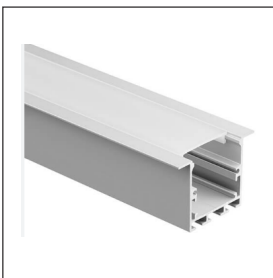
FIELDS OF APPLICATION

Office & Education, offices, open-plan offices, conference rooms, conference rooms, reception areas, counters, galleries, hotels, restaurants, living spaces

IEC 62717 LED-modules for general lighting – Performance requirements
IEC 62722-2-1 Particular requirements for LED luminaires

High Lumen Efficacy 145lm/W
Body - Anodized aluminum
Diffuser - Polycarbonate milky or black diffuser
Glowing Wire Test - 850°
Temperature - ta=20 °C ~ ta max=50 °C
Class - I

Model ----- 5635



Default Available



Product Assistant Chart

5635 X X X X X

Size — A —————

Driver 0 1 2 3 4

On/Off Dali Dimmable Phase Dimming 1-10

Beam Angle 120°

Kelvin 27 30 40 50 60

2700K 3000K 4000K 5000K 6000K Tunable RGB/W/WW

Finishing W B

white black

Wattage 8 10 12 15 20 25 30 35 40 45

mtr

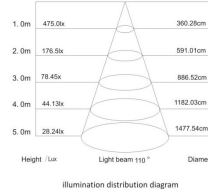
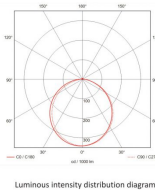
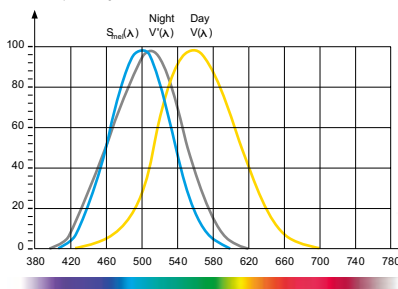
Lighting Customization Solution can offer you modifications for environment with higher options as a customized product.

McA Step 3 220~240V

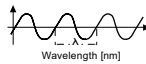


Relative spectral perception of brightness and melanopic effect

Effect as a percentage



Explanation of the three curves:
V(A) = Perception of brightness, daytime seeing with the cones
V(A) = Night-time seeing with the rods
S_{mel}(A) = Melatonin suppression with the photosensitive ganglion cells



LED life time		Operating time 1.000 h											
Lamp Lumen Maintenance Factor		1	10	20	30	40	50	60	70	80	90	100	
Lamp Survival Factor		1	1	1	1	1	1	1	1	0.99	0.99	0.99	
L80	50.000 h	LLMF	1	0.96	0.92	0.88	0.84	0.80	0.76	0.72	0.68	0.60	
		LSF	1	1	1	1	1	1	0.99	0.99	0.99	0.98	
L80	100.000 h	LLMF	1	0.98	0.96	0.94	0.92	0.90	0.88	0.86	0.84	0.82	0.80
		LSF	1	1	1	1	1	1	1	0.99	0.99	0.99	0.99



LED



series wiring

