

**Driver LC 100W 24V SC SNC**

essence series 24 V – not dimmable (IP20)

**Product description**

- \_ Constant voltage LED driver
- \_ Output voltage 24 V
- \_ Max. output power 100 W
- \_ Dimmable via external PWM LED dimmers attached on output side
- \_ The strain relief is included in both packaging variants. In the single packaging (SP) each Driver has also an individual packaging
- \_ Nominal lifetime up to 50,000 h
- \_ 5 years guarantee (conditions at [www.tridonic.com](http://www.tridonic.com))

**Typical applications**

- \_ Cove lighting, facade accent lighting, ceiling integration, refrigerated displays

**Technical details**

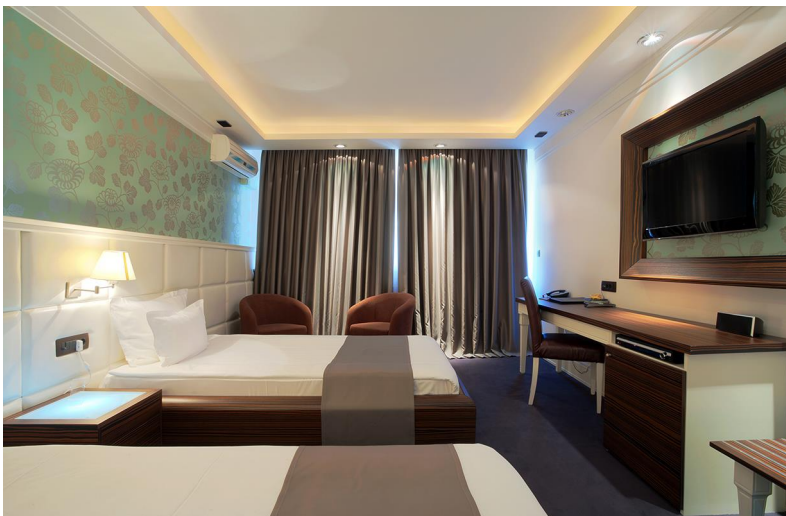
- \_ 24 V, 100 W
- \_ Small design (295 x 43 x 30 mm) with stretched-compact strain relief
- \_ Very good THD performance in wide load range < 5 %
- \_ Output LF voltage ripple (< 120 Hz)  $\pm$  1.5 %
- \_ Small cross section
- \_ Push terminals for simple wiring

**System solution**

- \_ Tridonic LLE-FLEX ADV G2 600, 1,200, 1,800 lm/m
- \_ Tridonic LLE-FLEX EXC 600, 1,200, 1,800, 2,500 lm/m
- \_ In connection with Flex accessories wire to PCB plug

**Website**

<http://www.tridonic.ae/87500666>



Spotlights



Downlights



Linear



Area



Floor | Wall



Free-standing



Street



Decorative



High bay



## Standards

EN 55015, EN 61000-3-2, EN 61000-3-3, EN 61347-1, EN 61347-2-13, EN 62384, EN 61547, IEC 60335-1, IEC 60335-2-89

## Specific technical data

| Type               | Load  | Output voltage | Output current | Max. Ausgangsleistung | Typ. power consumption | Typ. current consumption | tc point max. | Ambient temperature ta |
|--------------------|-------|----------------|----------------|-----------------------|------------------------|--------------------------|---------------|------------------------|
| LC 100W 24V SC SNC | 30 %  | 24 V           | 1,250 mA       | 30 W                  | 33.6 W                 | 166 mA                   | 75 °C         | -20 ... +50 °C         |
| LC 100W 24V SC SNC | 40 %  | 24 V           | 1,667 mA       | 40 W                  | 44.0 W                 | 207 mA                   | 80 °C         | -20 ... +50 °C         |
| LC 100W 24V SC SNC | 50 %  | 24 V           | 2,083 mA       | 50 W                  | 54.5 W                 | 250 mA                   | 80 °C         | -20 ... +50 °C         |
| LC 100W 24V SC SNC | 60 %  | 24 V           | 2,500 mA       | 60 W                  | 65.2 W                 | 295 mA                   | 85 °C         | -20 ... +50 °C         |
| LC 100W 24V SC SNC | 70 %  | 24 V           | 2,917 mA       | 70 W                  | 75.9 W                 | 340 mA                   | 85 °C         | -20 ... +50 °C         |
| LC 100W 24V SC SNC | 80 %  | 24 V           | 3,333 mA       | 80 W                  | 86.7 W                 | 385 mA                   | 90 °C         | -20 ... +50 °C         |
| LC 100W 24V SC SNC | 90 %  | 24 V           | 3,750 mA       | 90 W                  | 97.6 W                 | 432 mA                   | 90 °C         | -20 ... +50 °C         |
| LC 100W 24V SC SNC | 100 % | 24 V           | 4,167 mA       | 100 W                 | 108.5 W                | 478 mA                   | 90 °C         | -20 ... +45 °C         |

① Valid at 100 % dimming level.